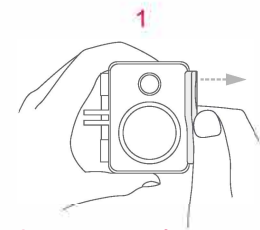
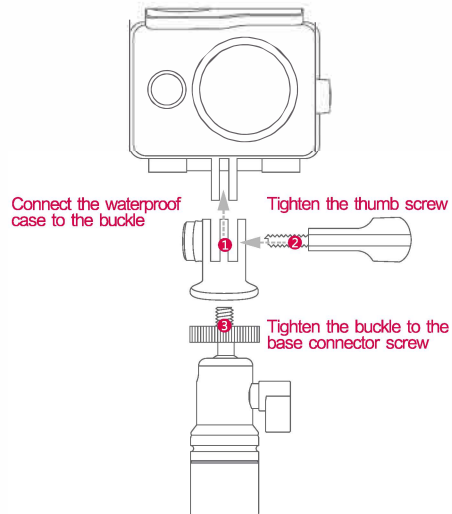
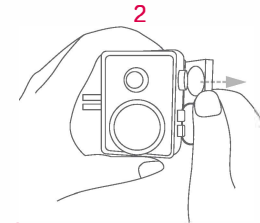




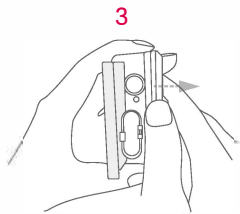
YI Waterproof Case



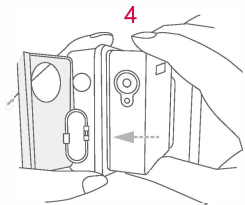
With the lens side facing up, pull the flap outward to release the lock



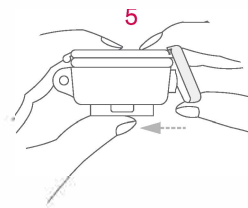
Push the flap down and out to unlatch the backdoor



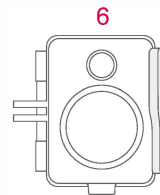
Gently pull the backdoor downward to open



Line camera lens and insert into the waterproof case until it fits snugly into the lens case



Gently close the backdoor and latch the flap on the edge of the backdoor. Press the loose end of the flap against the case to securely lock the case



The camera is now airtight fit inside the waterproof case

Tips: After using in salt water, safely remove the camera and wash the waterproof case with fresh water.

Thank you for choosing YI Waterproof Case.
Before using the product, please read this user guide.

YI Waterproof Case

Product Name: Waterproof Case

Product Type: XYFSK02

Material: PC, Glass, Silicon

Waterproof: up to depth of 40 meters

Operating temperature: -30°C ~ 45°C

Manufacturer: Xiaoyi Technology Co.,Ltd.

Address: 6/F, Building E, No.2889 Jinke Road, Pudong District, Shanghai, China.

Website: www.xiaoyi.com

VE 2.0